

Intelligent Truck Parking Guidance

Initial Situation / Motivation

The motivation of this measure was to avoid unnecessary traffic caused by truck drivers searching for parking spaces and thus increase the road safety of road users on federal motorways. For those responsible in the road haulage industry, this intended to make it easier for truck drivers to comply with driving and resting times.

Measure Goal

The aim was to make more efficient use of existing truck parking capacities by directing drivers (mainly trucks) with telematic support to a free parking space on the motorway.

Measure Implementation

Detectors were installed on the A9 motorway in the entrances and exits of rest facilities to detect free parking spaces. These detectors count the number of trucks entering and exiting the motorway station and thus record the parking situation. For regular verification of the degree of utilisation determined by the system's detectors, cameras are installed that can be used for calibration. The recorded data on the current parking space situation is distributed via digital media (e.g. apps, Internet) and thus made available to users.

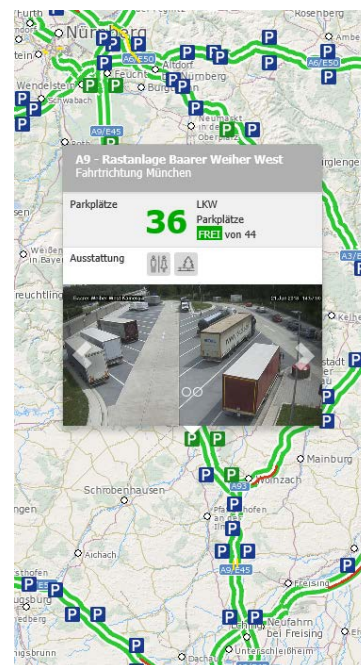
Current Status

Currently 22 of 25 possible installations are connected to the truck parking guidance system. Thus, the measure is completed. The remaining 3 installations can complement the system in the future.



Source: BASt

The parking space situation is made available to interested road users via www.BayernInfo.de together with webcam images (see picture in the bottom centre). The data is also made available via the MDM.

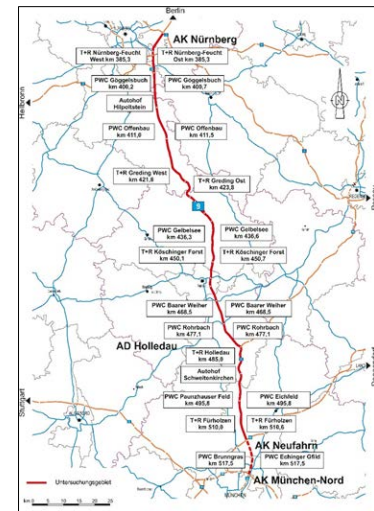


Source: BayernInfo.de

After the installation of the 22 systems of the truck parking guidance system, an analysis about the effectiveness including a survey was carried out. The analysis showed that the parking guidance systems are positively evaluated by truck drivers and that a solution with signs as an important source of information and a smartphone APP as a supplement is favored by truck drivers.

Furthermore it was detected, that the parking guidance systems achieve an optimization during the filling phase of the parking spaces.

Locations



Source: Southern Bavaria subsidiary of Autobahn GmbH

Contact: Federal Highway Research Institute; Email: DTA-infrastruktur@bast.de