

## Traffic Accidents

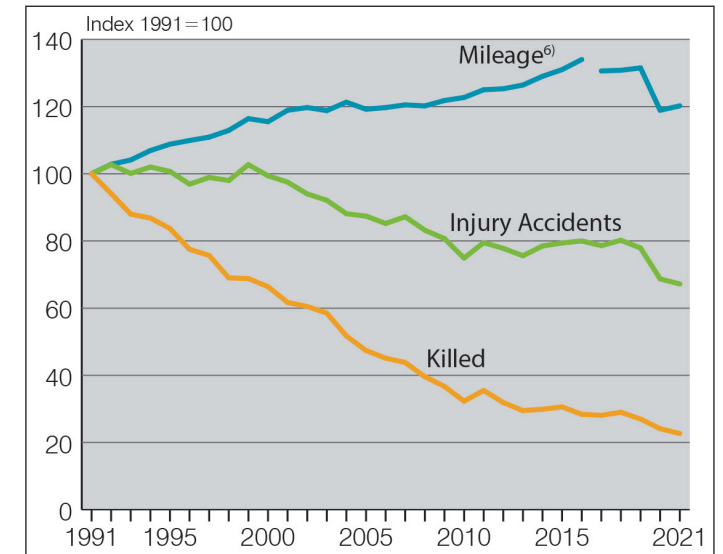
	1970	1980	1990	2000	2010	2015	2020	2021
<b>Total accidents</b>	1.392.007	1.684.604	2.010.575	2.350.227	2.411.271	2.516.831	2.245.245	2.314.938
Injury accidents	377.610	379.235	340.043	382.949	288.297	305.659	264.499	258.987
of which in urban areas	254.198	261.302	218.177	245.470	195.833	209.821	183.412	176.948
rural areas without autobahns	107.762	101.701	97.559	111.901	73.635	75.725	65.850	65.632
of which in national road	47.810	35.825	34.109	38.754	24.245	24.786	18.820	19.005
autobahns	15.650	16.232	24.307	25.578	18.829	20.113	15.237	16.407
<b>Injured accident rates</b> <b>[accidents/million veh.·km]</b>								
total	1,50	1,03	0,70	0,58	0,41	0,41	0,39	0,38 <sup>7)</sup>
autobahns	0,45	0,20	0,18	0,13	0,09	0,08	0,07	0,07 <sup>7)</sup>
national roads rural areas	0,93	0,57	0,42	0,36	0,22	0,23	0,20	0,20 <sup>7)</sup>
<b>Total killed</b>	19.193	13.041	7.906	7.503	3.648	3.459	2.719	2.562
of which in urban areas	8.494	5.124	2.205	1.829	1.011	1.048	810	746
rural areas without autobahns	9.754	7.113	4.765	4.767	2.207	1.997	1.592	1.498
of which in national roads	4.785	2.850	1.942	1.908	829	771	466	500
autobahns	945	804	936	907	430	414	317	318
pedestrians	6.056	3.095	1.459	993	476	537	376	343
drivers/riders and passengers of motorcycles	1.553	1.997	939	1.102	709	701	552	529
passenger cars	8.989	6.440	4.558	4.396	1.840	1.620	1.170	1.118
bicycles	1.835	1.142	711	659	381	383	426	372
persons under the age of 15 years	2.167	1.018	355	240	104	84	48	49
from 18 to 24 years	3.403	3.221	1.976	1.736	690	473	326	287
aged 65 years and older	4.016	2.733	1.574	1.311	910	1.024	894	868
<b>Fatality rate</b> <b>[fatalities/billion veh.·km]</b>								
total	76,5	35,4	16,2	11,3	5,2	4,6	4,0	3,7 <sup>7)</sup>
autobahns	27,0	10,0	6,9	4,5	2,0	1,7	1,5	1,4 <sup>7)</sup>
national roads and rural areas	92,7	45,6	24,2	17,6	7,7	7,2	4,8	5,2 <sup>7)</sup>
<b>Total injured</b>	531.795	500.463	448.158	504.074	371.170	393.432	327.550	323.129
of which in urban areas	331.176	323.656	265.643	300.798	238.131	253.560	213.985	207.090
rural areas without autobahns	173.483	151.704	143.388	163.078	104.166	107.498	90.266	90.622
of which in national roads	80.183	55.570	53.172	59.939	36.735	38.026	28.412	28.615
autobahns	27.136	25.103	39.127	40.198	28.873	32.374	23.299	25.417
pedestrians	77.449	56.451	39.169	38.115	29.663	31.073	23.482	22.652
drivers/riders and passenger of motorcycles	46.983	96.370	44.821	59.383	43.507	45.345	37.663	34.461
passenger cars	342.277	279.649	283.344	309.496	211.556	219.663	157.912	161.497
bicycles	40.531	50.436	64.145	72.738	65.192	77.793	91.847	83.753
persons under the age of 15 years	70.332	58.914	43.049	45.141	28.525	28.151	22.414	22.223
from 18 to 24 years	131.477	142.718	123.321	111.210	72.482	65.683	49.884	51.213
aged 65 years and older	27.842	30.795	28.905	36.327	39.592	47.666	45.311	44.255

## Traffic and Accident Data Summary Statistics – Germany



Bundesanstalt für Straßenwesen (BASt)  
Federal Highway Research Institute

Bergisch Gladbach, January 2023



**Motor Vehicle Population** (since 2007 including temporarily deregistered vehicles, since 2008 without decommissioned vehicles) <sup>1)</sup>

	1970	1980	1990	2000	2010	2015	2020	2021
Total (including miscellaneous) <sup>2)</sup>	16.783.227	29.226.359	36.702.727	53.107.377	52.288.623	55.751.993	58.158.344	58.020.089
mofas, mopeds <sup>2)</sup>	-	2.110.208	954.449	1.742.704	2.104.204	2.036.352	-	-
motorcycles <sup>3)</sup>	228.604	571.930	1.233.100	3.337.848	3.762.561	4.145.392	4.506.410	4.661.561
passenger cars	13.941.079	23.191.616	30.684.811	42.839.906	41.737.627	44.403.124	47.715.977	48.248.584
buses	47.253	70.458	70.370	85.574	76.433	77.501	81.364	75.548
trucks	1.028.116	1.277.167	1.388.505	2.526.896	2.385.099	2.701.343	3.276.093	3.410.280
tractor-trailers	34.638	60.293	78.166	162.409	170.911	188.481	219.149	218.469

**Highway Network for Interstate Traffic** (in Kilometer, as of 01 January in each case, in urban areas und rural areas)

	1970	1980	1990	2000	2010	2015	2020	2021
Total	162.344	171.521	173.861	230.735	230.969	230.147	229.783	229.721
autobahns	4.110	7.292	8.822	11.515	12.813	12.949	13.191	13.192
national roads	32.205	32.248	31.063	41.321	39.887	38.917	37.842	37.826
state roads	65.358	65.543	63.299	86.823	86.615	86.331	86.924	86.862
district roads	60.671	66.438	70.677	91.076	91.654	91.950	91.826	91.841

**Mileage** (in billion Kilometer) <sup>6)</sup>

	1970	1980	1990	2000	2010	2015	2020 <sup>7)</sup>	2021 <sup>7)</sup>
Total (including miscellaneous) <sup>4)</sup>	251,0	367,9	488,3	663,0	704,8	752,3	681,7	690,0 <sup>7)</sup>
<b>by type of motor vehicle <sup>4)</sup></b>								
mofas, mopeds	4,6	7,6	2,7	3,8	4,7	4,6	3,4	3,4
motorcycles	1,9	3,3	5,9	13,0	11,6	12,9	9,0	8,8
passenger cars	212,9	314,3	431,5	559,5	599,0	635,8	578,1	582,4
buses	2,0	3,0	3,1	3,7	3,3	3,4	2,9	2,9
trucks	26,4	33,1	33,1	58,9	60,7	68,6	64,0	68,0
tractor-trailers	2,0	4,0	5,8	12,7	16,9	17,2	19,6	20,0
<b>on federal highways <sup>5)</sup></b>								
autobahns	35,0	80,6	135,6	203,4	216,8	237,6	213,9	220,9 <sup>7)</sup>
national roads rural areas	51,6	62,5	80,3	108,2	107,9	107,4	96,4	97,0 <sup>7)</sup>

**Reference:**

Federal Statistical Office (StBA), Federal Motor Transport Authority (KBA), Federal Ministry for Digital and Transport (BMDV), German Institute for Economic Research (DIW), German Aerospace Center (DLR), Federal Highway Research Institute (BAST)

All data until 1990 including old federal states.

**Footnotes:**

- 1) until 2000 as of 01 July in each case; from 2005 onwards: as of 01 January in each case; since 01.01.2006: passenger cars including mobile homes, ambulances, emergency doctor's cars
  - 2) including light three- and four-wheeled vehicles with insurance licence plates, as of 2017, no more inventory data of mofas and mopeds are available from KBA
  - 3) until 1990 without light and small motorcycles (LMC, SMC); from 1995 onwards including LMC, SMC; from 2004 onwards including three- and light four-wheeled vehicles with registration number
  - 4) resident mileage (including routes covered by German vehicles abroad); DLR and DIW
  - 5) domestic mileage (including mileage of vehicles registered abroad); BAST
  - 6) recalculation of the mileage and consumption bill as of 2017
  - 7) provisional data
- \*) Due to the corona pandemic, the mileage figures of 2020 and 2021 are subject to major uncertainties. Particularly at the level of detail shown here, the values are very uncertain and subject to change.



Bundesanstalt für Straßenwesen  
Federal Highway Research Institute  
Bruederstrasse 53  
D - 51427 Bergisch Gladbach  
Phone +49 2204 43-0  
E-Mail info@bast.de  
[www.bast.de](http://www.bast.de)