

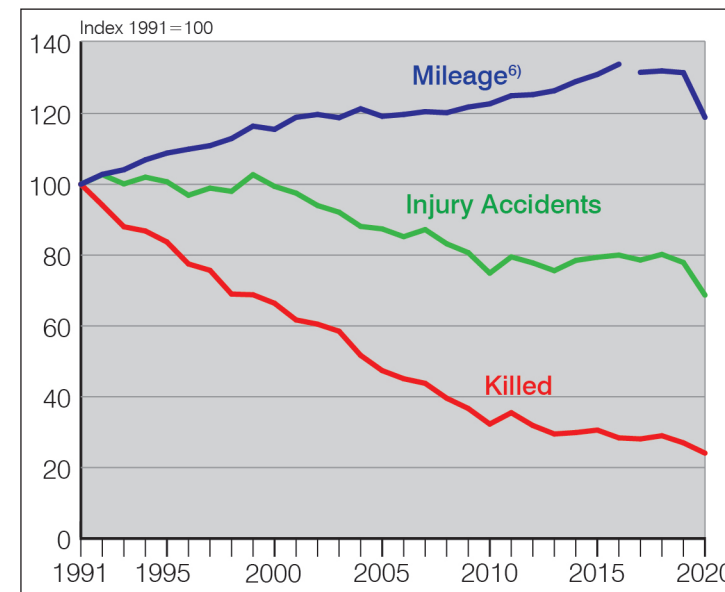
Traffic Accidents

	1970	1980	1990	1991	2000	2010	2015	2019	2020
Total accidents	1.392.007	1.684.604	2.010.575	2.311.466	2.350.227	2.411.271	2.516.831	2.685.661	2.245.245
Injury accidents	377.610	379.235	340.043	385.147	382.949	288.297	305.659	300.143	264.499
of which in urban areas	254.198	261.302	218.177	245.617	245.470	195.833	209.821	207.625	183.412
rural areas without autobahns	107.762	101.701	97.559	112.182	111.901	73.635	75.725	72.538	65.850
of which in national roads	47.810	35.825	34.109	40.728	38.754	24.245	24.786	23.104	18.820
autobahns	15.650	16.232	24.307	27.348	25.578	18.829	20.113	19.980	15.237
Injured accident rates [accidents/million veh.·km]									
total	1,50	1,03	0,70	-	0,58	0,41	0,41	0,40	0,39 ¹⁾
autobahns	0,45	0,20	0,18	-	0,13	0,09	0,08	0,08	0,07 ²⁾
national roads rural areas	0,93	0,57	0,42	-	0,36	0,22	0,23	0,21	0,20 ²⁾
Total killed	19.193	13.041	7.906	11.300	7.503	3.648	3.459	3.046	2.719
of which in urban areas	8.494	5.124	2.205	3.349	1.829	1.011	1.048	932	810
rural areas without autobahns	9.754	7.113	4.765	6.399	4.767	2.207	1.997	1.758	1.592
of which in national roads	4.785	2.850	1.942	2.713	1.908	829	771	648	466
autobahns	945	804	936	1.552	907	430	414	356	317
pedestrians	6.056	3.095	1.459	1.918	993	476	537	417	376
drivers/riders and passengers of motorcycles	1.553	1.997	939	1.235	1.102	709	701	605	552
passenger cars	8.989	6.440	4.558	6.801	4.396	1.840	1.620	1.364	1.170
bicycles	1.835	1.142	711	925	659	381	383	445	426
persons under the age of 15 years	2.167	1.018	355	511	240	104	84	55	48
from 18 to 24 years	3.403	3.221	1.976	2.749	1.736	690	473	363	326
persons aged 65 years and over	4.016	2.733	1.574	1.853	1.311	910	1.024	1.037	894
Fatality rate [fatalities/billion veh.·km]									
total	76,5	35,4	16,2	-	11,3	5,2	4,6	4,0	4,0 ¹⁾
autobahns	27,0	10,0	6,9	-	4,5	2,0	1,7	1,4	1,5 ²⁾
national roads and rural areas	92,7	45,6	24,2	-	17,6	7,7	7,2	5,9	4,8 ²⁾
Total injured	531.795	500.463	448.158	505.535	504.074	371.170	393.432	384.230	327.550
of which in urban areas	331.176	323.656	265.643	298.712	300.798	238.131	253.560	248.412	213.985
rural areas without autobahns	173.483	151.704	143.388	163.520	163.078	104.166	107.498	103.902	90.266
of which in national roads	80.183	55.570	53.172	62.526	59.939	36.735	38.026	35.976	28.412
autobahns	27.136	25.103	39.127	43.303	40.198	28.873	32.374	31.916	23.299
pedestrians	77.449	56.451	39.169	46.307	38.115	29.663	31.073	29.826	23.482
drivers/riders and passenger of motorcycles	46.983	96.370	44.821	55.080	59.383	43.507	45.345	41.260	37.663
passenger cars	342.277	279.649	283.344	313.589	309.496	211.556	219.663	206.129	157.912
bicycles	40.531	50.436	64.145	70.005	72.738	65.192	77.793	86.897	91.847
persons under the age of 15 years	70.332	58.914	43.049	50.773	45.141	28.525	28.151	27.950	22.414
from 18 to 24 years	131.477	142.718	123.321	132.015	111.210	72.482	65.683	59.384	49.884
aged 65 years and over	27.842	30.795	28.905	32.011	36.327	39.592	47.666	51.407	45.311

**Traffic and Accident Data
Summary Statistics – Germany**


Bundesanstalt für Straßenwesen (BASt)
Federal Highway Research Institute

Bergisch Gladbach, December 2021



Motor Vehicle Population (since 2007 including temporarily deregistered vehicles, since 2008 without decommissioned vehicles) ¹⁾

	1970	1980	1990	2000	2010	2015	2019	2020
Total (including miscellaneous) ²⁾	16.783.227	29.226.359	36.702.727	53.107.377	52.288.623	55.751.993	57.305.201	58.158.344
mofas, mopeds ²⁾	-	2.110.208	954.449	1.742.704	2.104.204	2.036.352	-	-
motorcycles ³⁾	228.604	571.930	1.233.100	3.337.848	3.762.561	4.145.392	4.438.600	4.506.410
passenger cars	13.941.079	23.191.616	30.684.811	42.839.906	41.737.627	44.403.124	47.095.784	47.715.977
buses	47.253	70.458	70.370	85.574	76.433	77.501	80.519	81.364
trucks	1.028.116	1.277.167	1.388.505	2.526.896	2.385.099	2.701.343	3.149.263	3.276.093
tractor-trailers	34.638	60.293	78.166	162.409	170.911	188.481	218.454	219.149

Highway Network for Interstate Traffic (in Kilometer, as of 01 January in each case, in urban areas und rural areas)

	1970	1980	1990	2000	2010	2015	2019	2020
Total	162.344	171.521	173.861	230.735	230.969	230.147	229.826	229.783
autobahns	4.110	7.292	8.822	11.515	12.813	12.949	13.141	13.191
national roads	32.205	32.248	31.063	41.321	39.887	38.917	37.879	37.842
state roads	65.358	65.543	63.299	86.823	86.615	86.331	86.946	86.924
district roads	60.671	66.438	70.677	91.076	91.654	91.950	91.860	91.826

Mileage (in billion Kilometer) ⁶⁾

	1970	1980	1990	2000	2010	2015	2019	2020
Total (including miscellaneous) ⁴⁾	251,0	367,9	488,3	663,0	704,8	752,3	755,0	682,9 ⁷⁾
by type of motor vehicle ⁴⁾								
mofas, mopeds	4,6	7,6	2,7	3,8	4,7	4,6	3,9	3,4 ⁷⁾
motorcycles	1,9	3,3	5,9	13,0	11,6	12,9	9,9	9,0 ⁷⁾
passenger cars	212,9	314,3	431,5	559,5	599,0	635,9	644,8	578,1 ⁷⁾
buses	2,0	3,0	3,1	3,7	3,3	3,4	4,6	4,1 ⁷⁾
trucks	26,4	33,1	33,1	58,9	60,7	68,6	67,0	64,0 ⁷⁾
tractor-trailers	2,0	4,0	5,8	12,7	16,9	17,2	20,4	19,6 ⁷⁾
on federal highways ⁵⁾								
autobahns	35,0	80,6	135,6	203,4	216,8	237,6	252,6	213,9 ⁷⁾
national roads rural areas	51,6	62,5	80,3	108,2	107,9	107,4	109,3	96,4 ⁷⁾

Reference:

Federal Statistical Office (StBA), Federal Motor Transport Authority (KBA), Federal Ministry for Digital and Transport (BMDV), German Institute for Economic Research (DIW), German Aerospace Center (DLR), Federal Highway Research Institute (BAST)

All data until 1990 (incl.) old federal states.

Footnotes:

- 1) until 2000 as of 01 July in each case; from 2005 onwards: as of 01 January in each case; since 01.01.2006: passenger cars including mobile homes, ambulances, emergency doctor's cars
 - 2) including light three- and four-wheeled vehicles with insurance licence plates, as of 2017, no more inventory data of mofas and mopeds are available from KBA
 - 3) until 1990 without light and small motorcycles (LMC, SMC); from 1995 onwards including LMC, SMC; from 2004 onwards including three- and light four-wheeled vehicles with registration number
 - 4) resident mileage (including routes covered by German vehicles abroad), DLR and DIW
 - 5) domestic mileage (including mileage of vehicles registered abroad); BAST
 - 6) recalculation of the mileage and consumption bill as of 2017
 - 7) provisional data
- *) Due to the corona pandemic, the mileage figures are subject to major uncertainties. Particularly at the level of detail shown here, the values are very uncertain and subject to change.



Bundesanstalt für Straßenwesen
Federal Highway Research Institute
Bruederstrasse 53
D - 51427 Bergisch Gladbach
Phone +49 2204 43-0
E-Mail info@bast.de
www.bast.de