

# Connected Mobility in Practice

## AORTA – Automated Emergency Corridors in Complex Scenarios by Intelligent Connectivity

- Support emergency vehicles in arriving faster and safer
- Gain life-saving seconds and minutes, especially in cities

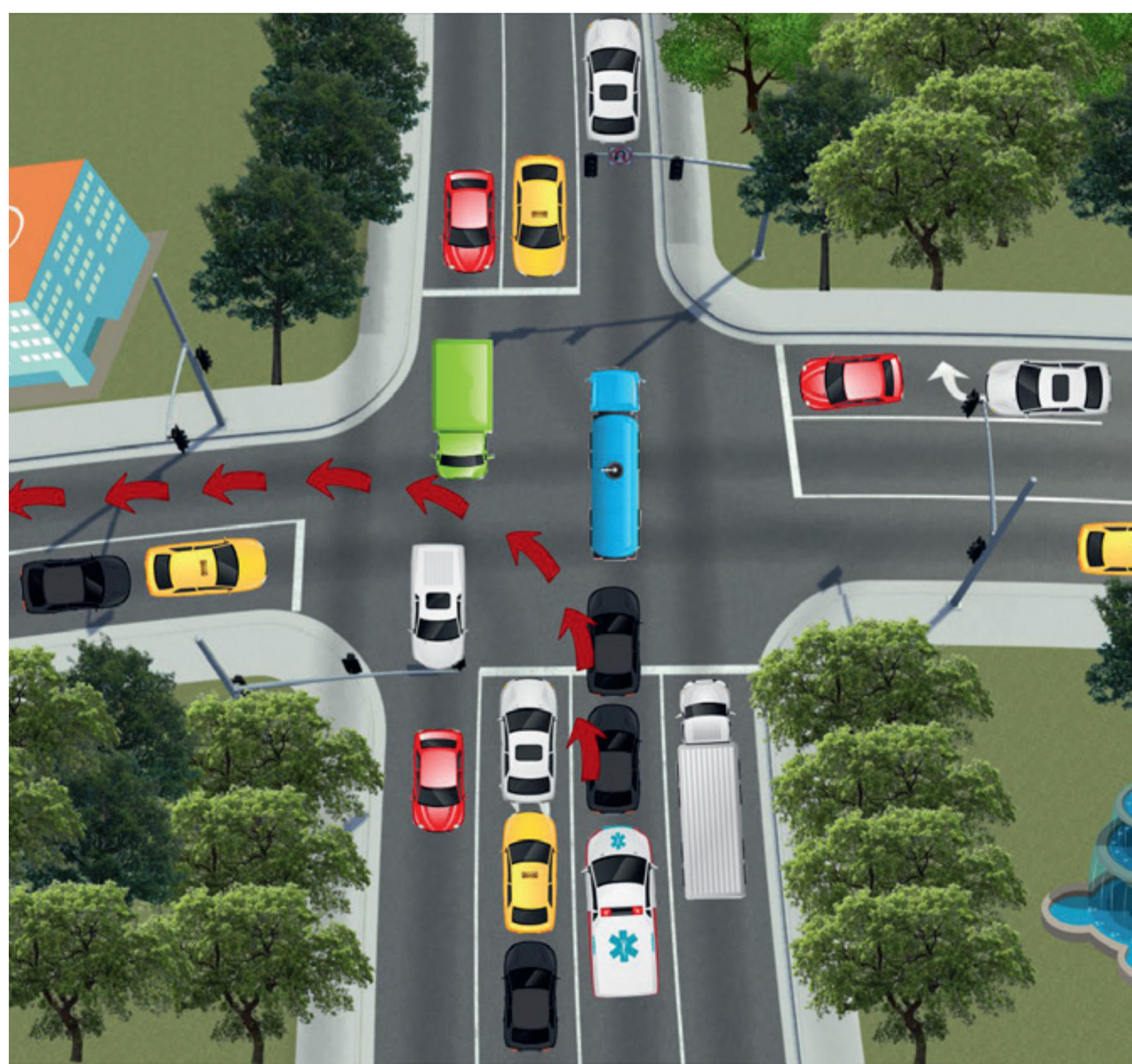
Develop an intelligent platform which implements and links two major decision levels on very different scales:

### Macromanagement

- Route planning
- Traffic Control
- Route optimization

### Micromanagement

- Alignment with other vehicles
- Environmental perception
- Automated driving



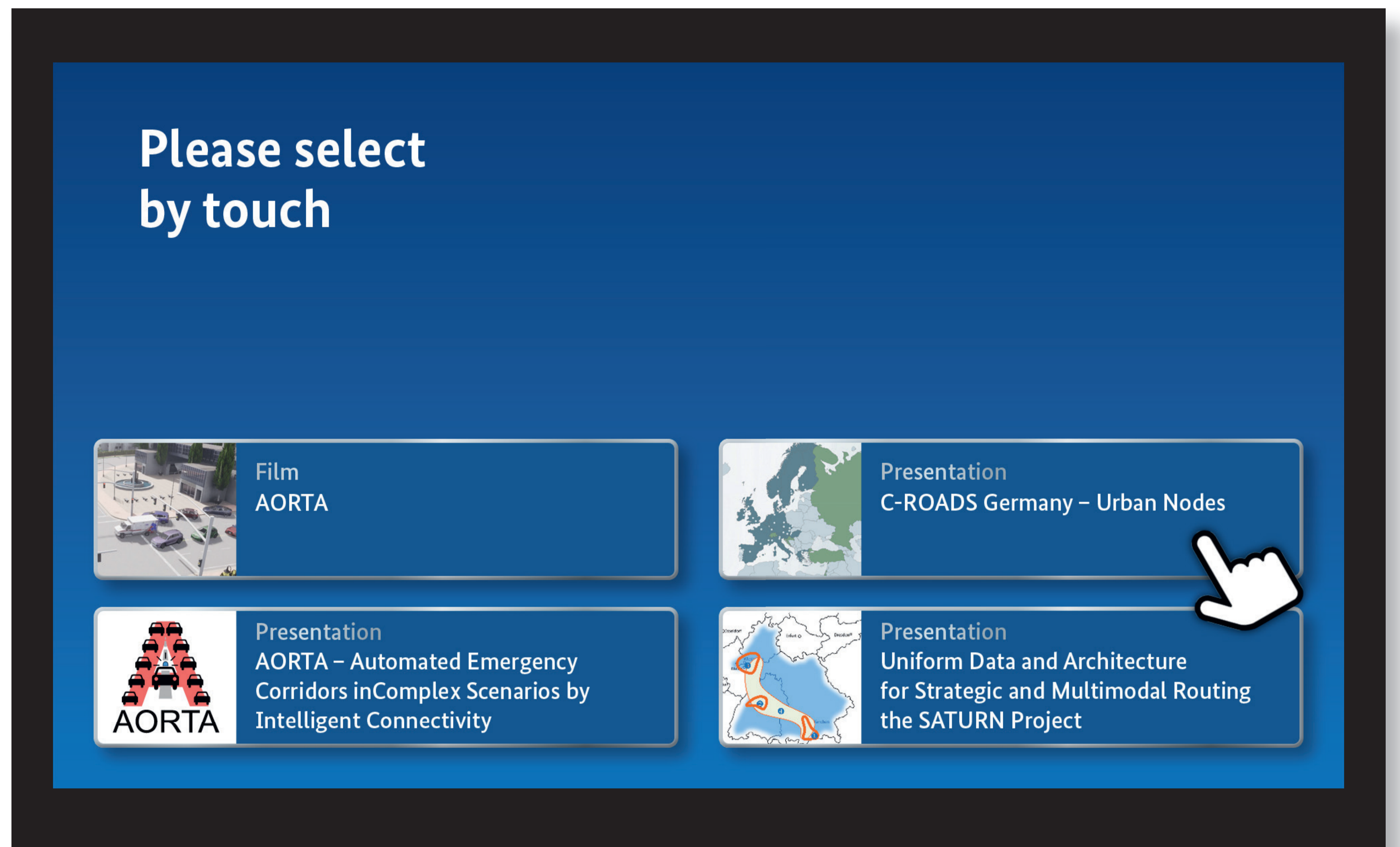
## Further Information



Funded by:



on the basis of a decision by the German Bundestag



## C-Roads – Harmonized Deployment of infrastructure-based C-ITS services in Europe

3 out of 43 C-Roads cities in the EU are part of the German pilot project “C-Roads Germany – Urban Nodes”: Dresden, Hamburg und Kassel

Establishing a direct communication between the infrastructure side (Road-Side Units) and vehicles (On-Board Units)

- Increasing traffic safety
- Improving traffic flow

### Realized Services:

- Probe Vehicle Data
- Road Works Warning
- Green Light Optimal Speed Advisory
- Emergency Vehicle Approaching
- Route Advice, Smart Re-Routing
- Protection of VRUs (Vulnerable Road User)
- Prioritization of public transport and special vehicles



## Further Information



Co-funded by the European Union



## SATURN – Public-sector traffic management aligned with private-sector information and navigation systems

- New tools for data collection and new data interfaces for the public sector
- Use of traffic management strategies in multimodal travel-information services
- Deployment in both metropolitan and rural areas
- Harmonisation of system architectures and data formats

### Pilot areas in Germany:

- 1. Oberland - Munich region:** Guiding and routing strategies for touristic travel
- 2. Stuttgart region:** Guiding and routing strategies for event travel
- 3. Frankfurt Rhine/Main region:** Guiding and routing strategies for commuter travel
- 4. Cross-state level:** Guiding and routing strategies between Baden-Württemberg, Hesse and Bavaria

## Further Information



Funded by:



on the basis of a decision by the German Bundestag